

Automatic Urethane Foam Tester

UFT Series / UFT-D Series

Deliver High Precision Measurement via 3 load cells even if there is unbalance load. The tester alone can meet a variety of specifications such as JIS K6400-2, JASO B408 & etc.

UFT Series

UFT-5KN / UFT-2KN

This UFT series can satisfy a variety of urethane foam test. The 3 load cells enable this tester to deliver high precision load detection even in the presence of unbalance load. Test sample placed on the wide test table (1000 x 700mm) can be measured just as it is. For instance a car seat can also be place on the test table and measurement can take place as it is. The installed urethane foam testing program can change "%", "Cycle" and "Time". The tester also meets the Hardness Test and Deflection Test Specifications of Automotive Manufacturer under fixed load.

Test Conditions and Results can be stored in USB Memory and export to Microsoft Excel for Test Inspections. The tester also adopts "Program Load" via USB Memory and it can also meet requirements of any custom made test.

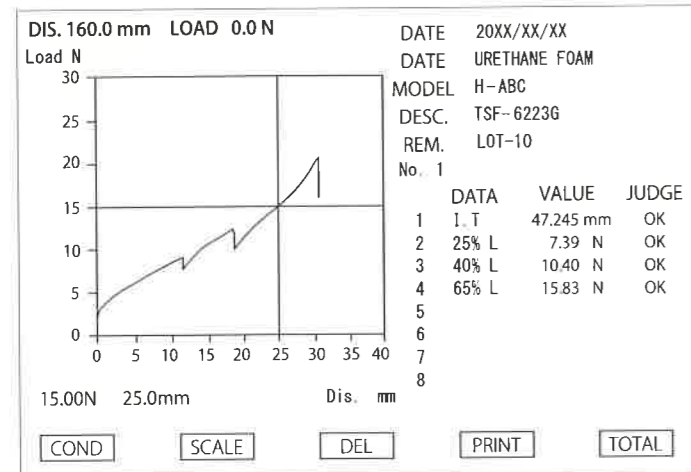
External control test using PC Software is also possible.



TYPE OF TEST

- ◆ Hardness Test JIS K6400-2 Method A, B, C & D
- ◆ Compression Deflection Test JIS K6400-2 Method A-1 & A-2
- ◆ Compression Deflection Test JIS K6400-2 Method B
- ◆ Micro Displacement Spring Rate Test
- ◆ Stress Relaxation Test
- ◆ Compression Load Test
- ◆ External Control Test via PC

GRAPH DISPLAY



TEST CONDITION

Hardness Test	Comp. Def. Test	Micro Displacement Spring Rate Test	Stress Relax Test
Initial Thickness Load	Initial Thickness Load	Initial Thickness Load	Initial Thickness Load
Prelim Comp Speed	Prelim Comp Speed	Prelim Comp Speed	Prelim Comp Speed
Prelim Comp Point	Prelim Comp Point	Prelim Comp Point	Prelim Comp Point
Prelim Comp Cycle	Prelim Comp Cycle	Prelim Comp Cycle	Prelim Comp Cycle
Holding Time	Holding Time / -	Holding Time	Holding Time
Test Speed 1	Test Speed	Test Speed	Test Speed 1
Test Point 1	Test Point	Return Load a	Stop Load
Rest Time 1		Return Load b	Holding Time 1
Test Speed 2		Return Load c	Holding Time 2
Test Point 2		Return Load d	
Rest Time 2			
Test Speed 3			
Test Point 3			
Rest Time 3			

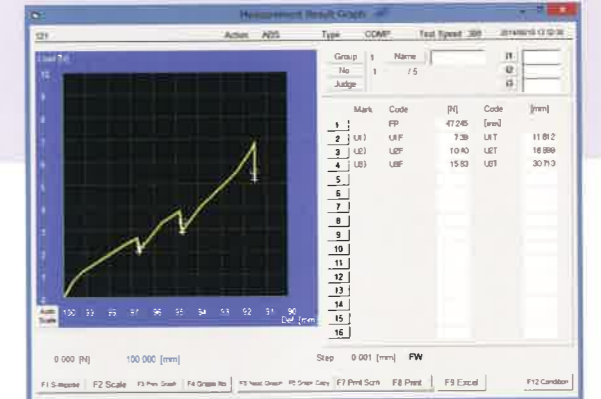
PC SOFTWARE

MXR-01

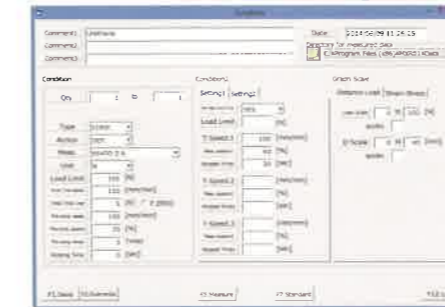
This Urethane Foam Tester can be fully utilized by connecting to PC Software.

Starting from Hardness Test, the tester can be used for various Urethane Foam Test based on JIS. Test can be started by simply selecting test conditions that are set beforehand. User can export results to Microsoft Excel or store in CSV file format. Histogram or Cp, Cpk is also possible for Quality Control.

GRAPH DISPLAY Hardness Test

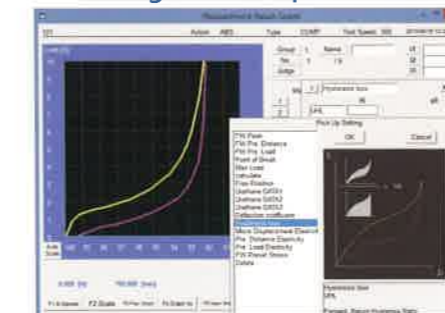


Test Conditions Setting Screen



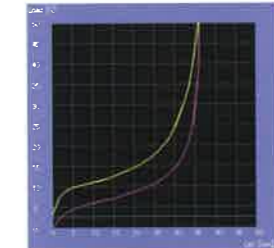
You can start testing easily by selecting the pre-set test condition.

Setting of Pick-Up Data

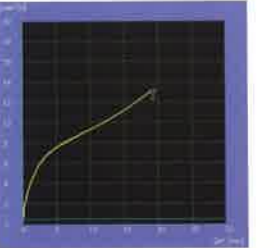


Various pick-up data can be set.

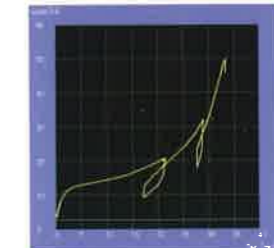
Compression Deflection Test



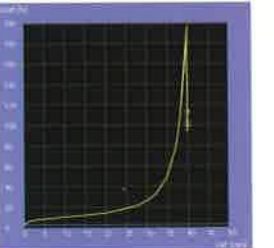
Compression Deflection Test



Micro Displacement Spring Rate Test



Stress Relaxation Test



For Basic Urethane Foam Test, please see the list.

UFT-D Series

UFT-D-5KN

This Urethane Foam Tester package is the combination of HIT Tester. The user friendly and high functionality HIT Tester as the base and table for Urethane Foam and Anvil with PC Software.

The attached software can be used to measure Urethane Foam. The tester can also be used for general Load Test. Through our long years of experience in the Measuring Technology industry, we are able to provide traceability for high functionality and high precision.



※This tester is exclusive use for testing flat cut urethane foam. The rack shown in the photo is optional.

Model	UFT-5KN / UFT-2KN		UFT-D-5KN				
Test Table Size	1000×700 mm		600×600 mm				
Standard Anvil Dia.	Universal Ball Joint Φ200mm anvil						
Applicable Specifications	JIS B 7721 COMPRESSION/TENSION TESTER CLASS 0.5		JIS B 7721 COMPRESSION/TENSION TESTER CLASS 1				
Stroke	550mm		800mm				
Length Resolution	0.1 or 0.01 mm (convertible)		0.01mm				
Length Accuracy	Within±(0.05+0.0001L)mm (L is arbitrary length in mm)						
Test Speed	1~1000mm/min						
Cross Head Control	Precision ball screw and AC servo motor controlled						
Move Key Function	High Speed : 600 (mm/min) Step (Inching) 1 (mm) Medium Speed : 60 (mm/min) Step (Inching) 0.1 (mm) Low Speed : 6 (mm/min) Step (Inching) Noting						
Capacity	Main body is capable for 5kN / 2kN		Main body is capable for 5kN. ※Load capacity varies with the attached loadcell				
Load Cell	3 load cells (Useful for unbalance load and precision measurement)		Applicable load cell is 10N - 5kN, 0.5 - 3.0 mV/V Can register up to 5 Channels of load cell				
Range Changeover	4 Ranges Manual or Automatic		2 Ranges Automatic (1/10 range and 1/1 range of attached load cell capacity)				
Load Resolution	5kN	Measurement Range	5000N	2000N	1000N	500N	Less than 1/10 of Load cell capacity : 1/100000 resolution Over 1/10 of Load cell capacity : 1/10000 resolution Example 10N Load cell : Up to 1N - 0.0001N / Over 1N - 0.001N 500N Load cell : Up to 50N - 0.005N / Over 50N - 0.05N
		Load resolution	1N	0.1N	0.1N	0.1N	
	2kN	Measurement Range	2000N	1000N	500N	200N	
		Load resolution	0.1N	0.1N	0.1N	0.01N	
Load Accuracy	± 0.5% of Applied Load						
Unit	N, kN(kgf·lbf)						
Protective STOP Function	STOP via Up/Down Limit Switches. STOP via range over. STOP via STOP key or Emergency STOP key. STOP via value set by testing software.						
Display	LCD	LCD with CCFL Backlight	Display Area	W115×H29mm			
	Backlight lifespan	25,000h Half-reduced brightness lifespan	Display Resolution	256×64dot			
	Display Area	W147×H110mm					
	Display Resolution	640×480 dot					
PC Software	The tester alone can perform testing. MXR-01 (Urethane Foam testing mode)		Need PC with MXR-01 (Urethane Foam testing mode)				
Printer	Internal Printer	Thermal transfer dot printing Print density 8 dot/mm Effective print width 108mm Print speed: 480 dot line/sec	Optional printer				
Interface	RS232C photocoupler insulated input/output + common, input 8 points output 8 points (judgment output) Analog output : FORCE, DISTANCE		RS232C : COM1 → PC, COM2 → PRINTER and other I/O port : photocoupler insulated input/output + common, input 8 points output 8 points				
Power	AC100V or AC200V						
Max Power Consumption	300VA		500VA				
Dimension	WDH 1115 X 750 X 1980 mm		WDH 1000 X 550 X 1750 mm (including control panel)				
Weight	350kg		240kg				

Please consult us for any special request of measuring method.



当社は、測定標準として、JIS Q 17025 (ISO/IEC 17025)を用い、測定スキームをISO/IEC 17011に従って運営されているJCSSのFで認定されています。JCSSを運営している認定機関 (AJapan)は、アジア太平洋試験所認定能力機関 (APLAC)及び国際試験所認定能力機関 (ILAC)の相互承認に準拠しています。

当社JCSS校正部は、国際 MRA 対応 JCSS 認定事業者です。JCSS0215は、当社JCSS校正部の認定番号です。



● Manufacturer



JAPAN INSTRUMENTATION SYSTEM Co.,Ltd.

■ HEAD OFFICE 526-1 OHNISHI SAKURAI CITY NARA-KEN 633-0077, JAPAN
email : sales@jisc-jp.com http://www.jisc-jp.com
TEL+81-744-46-5521 FAX+81-744-46-5527

● Agent

CHINA JISC SHANGHAI CO., LTD.
email:sales.sh@jisc-cn.com
TEL +86-21-5089-9727 FAX +86-21-5090-6250

ALGOL INSTRUMENT CO., LTD. - DONGGUAN BRANCH
email:sales@algol.com.cn
TEL +86-769-8507-0404 FAX +86-769-8507-0407

TAIWAN ALGOL INSTRUMENT CO., LTD.
email:service@algol.com.tw
TEL +886-3-3878-525 FAX +886-3-3878-526

KOREA K&K TRADING CO., LTD.
email:kandk@paran.com
TEL +82-31-737-6691 FAX +82-31-737-6693

SINGAPORE (MALAYSIA·THAILAND·INDONESIA·PHILIPPINES)
MEASURING INSTRUMENT TECHNOLOGY PTE LTD.
email:sales@mit-sg.com
TEL +65-6275-6966 FAX +65-6275-6977

VIETNAM JISC Vietnam Co., Ltd.
email:sales.han@jisc-vn.com
TEL +84-4-3783-4559 FAX +84-4-3783-4560

JISC

JAPAN INSTRUMENTATION SYSTEM Co.,Ltd.

日本計測システム株式会社

Member of Japan Testing Association
Member of Japan Spring Machine Association

URETHANE FOAM TESTER

