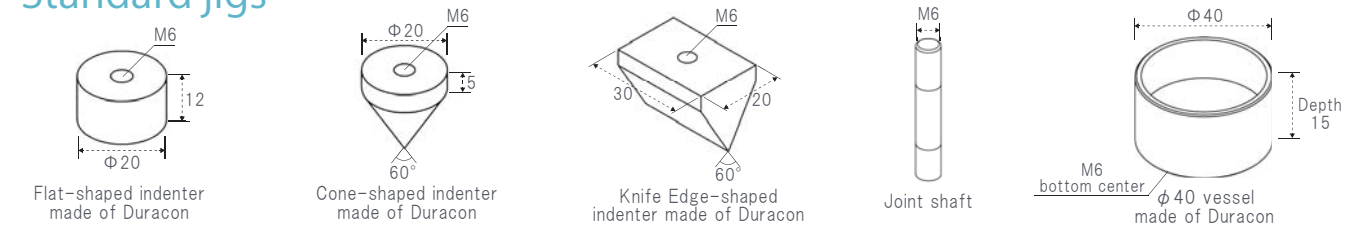
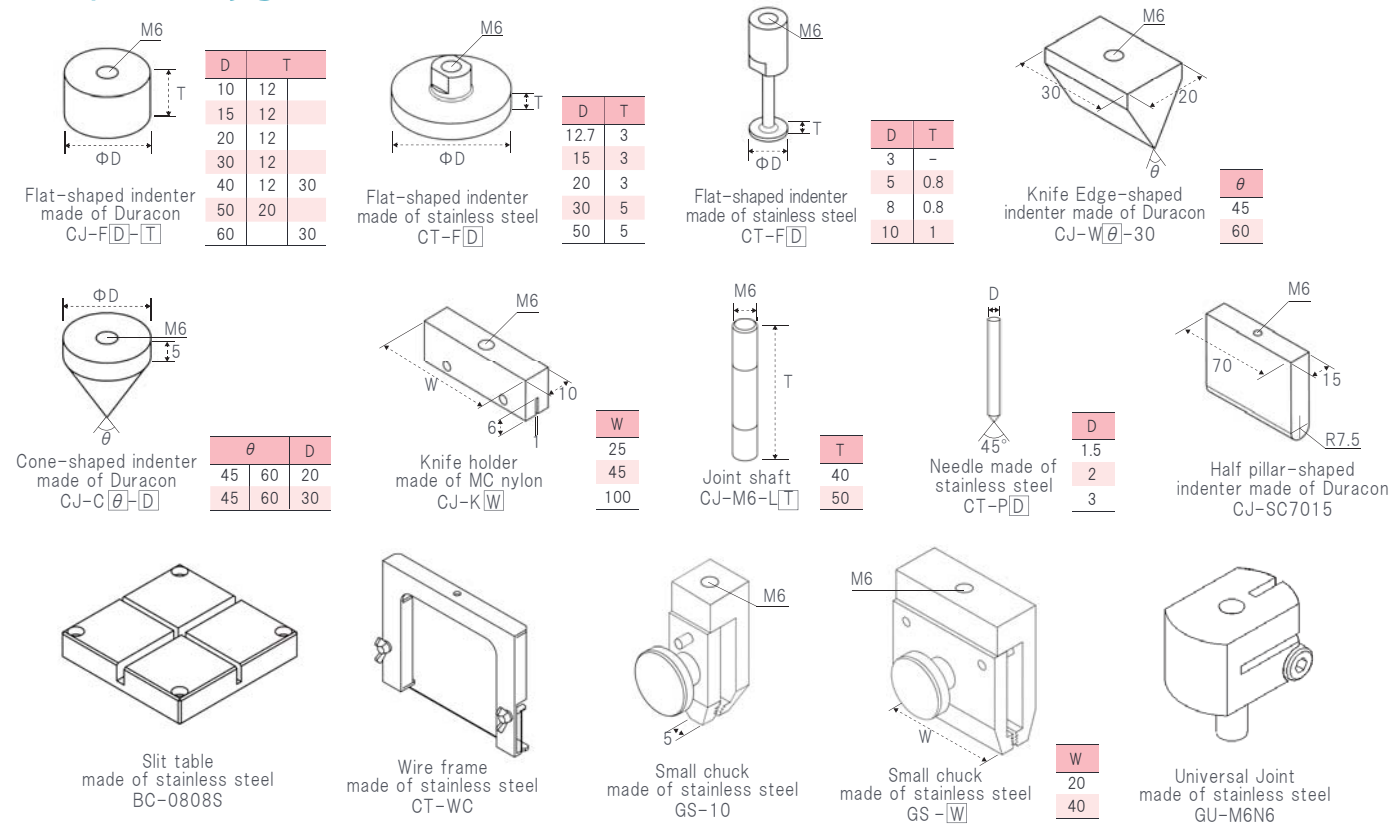


Standard jigs

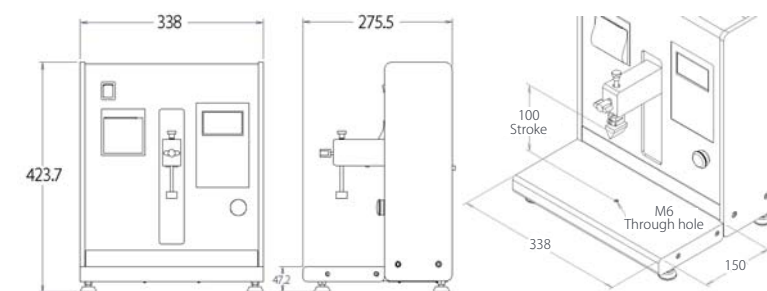


Optional jigs



External appearance•Working platform•Specifications

External appearance•Working platform



Specifications

Specifications	Details
Minimum length display	0.1mm
Testing speed	1~600mm/min
Power supply voltage	AC100V~AC240V
Dimension	W338×D275.5×H430.5
Weight	Approx. 16.5 kg
Language	Japanese•English•Simple Chinese Traditional Chinese•Korean

※ The specifications in this catalogue subject to change without any notice.

Manufacturer

JISC

JAPAN INSTRUMENTATION SYSTEM Co.,Ltd.

HEAD OFFICE

526-1 OHNISHI SAKURAI CITY NARA-KEN 633-0077, JAPAN
email : sales@jisc-jp.com http://www.jisc-jp.com
TEL+81-744-46-5521 FAX+81-744-46-5527

Agent

CHINA

JISC SHANGHAI CO., LTD.
email:sales.sh@jisc-cn.com
TEL +86-21-5089-9727 FAX +86-21-5090-6250

ALGOL INSTRUMENT CO., LTD. - DONGGUAN BRANCH
email:sales@algol-dg.com.cn
TEL +86-769-8507-0404 FAX +86-769-8507-0407

TAIWAN

ALGOL INSTRUMENT CO., LTD.
email:service@algol.com.tw
TEL +886-3-3878-525 FAX +886-3-3878-526

KOREA

K&K TRADING CO., LTD.
email:kandk@paran.com
TEL +82-31-737-6691 FAX +82-31-737-6693

SINGAPORE (MALAYSIA•THAILAND•INDONESIA•PHILIPPINES)

MEASURING INSTRUMENT TECHNOLOGY PTE LTD.
email:sales@mit-sg.com
TEL +65-6275-6966 FAX +65-6275-6977

VIETNAM

JISC Vietnam Co., Ltd.
email:sales.han@jisc-vn.com
TEL +84-4-3783-4559 FAX +84-4-3783-4560

TEX-100N

Texture Tester



JISC

JAPAN INSTRUMENTATION SYSTEM Co.,Ltd.
日本計測システム株式会社

Support you to produce tasty and safe food

Visualizing the food texture with numeric value, it supports you to produce tasty and safe food.

Texture tester TEX-100N



So far texture of foods is judge by human sense of mouth feel. The human sense is very important criteria but it has big problem. Definition is not clear and feeling differs from person to person. Texture Tester 「TEX-100N」can visualize the fuzzy 「mouthfeel」with “numeric value” so that you can make objective judgment of the texture. For example, if you are manufacturer or server of the foods for children and elderly people, it is very important to check safety hardness for swallowing of such foods.

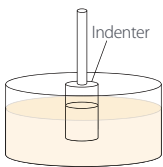
Texture Tester 「TEX-100N」 can be used for researching the food texture that affect to palatability for developing food and for checking as if the food for dysphagia satisfies the criteria. It will be a good support for the quality control and inspection in the fields of food manufacturing processes.



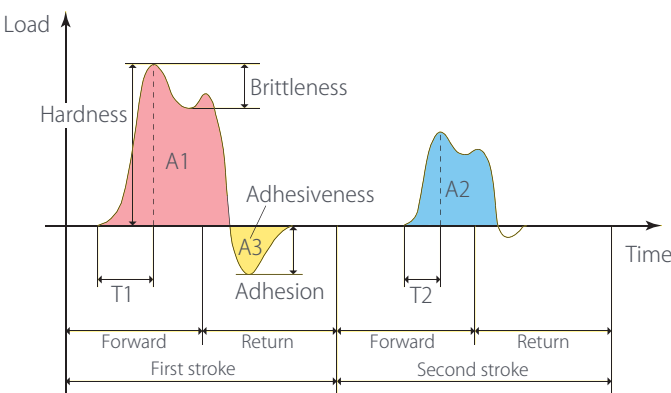
What is testing texture?

Texture testing

The tester measures by compressing the foods with jig (indenter) then automatically calculates the data such as hardness and adhesiveness based on the texture profile analysis method※



※ texture profile analysis method



Measured data

The tester can provide you the following measurement results: Hardness, Adhesiveness, cohesiveness, Brittleness, Springness, Chewiness, Gumminess and adhesive force.

※These results are calculated based on the texture profile analysis method.

Applicable tests for TEX-100N

- ☐ Texture test
- ☐ Jelly strength test (JIS K 6503 or minced fish)
- ☐ Compression test
- ☐ Tension test
- ☐ Peel test

Measurement example

Texture of the boil-in-the-bag soup on the market is tested for checking as if it is conform to the criteria of the foods for dysphagia.



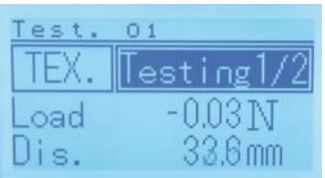
Set the sample material on the platform. Select Texture from the MENU and press START key.



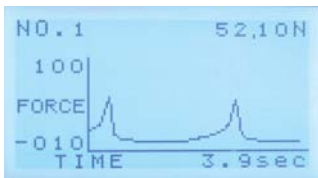
The sample material should be put in the vessel full to the brim.



MENU Display



Measuring Display



You can check the measurement result.

Anyone can operate TEX-100N

I can do it!

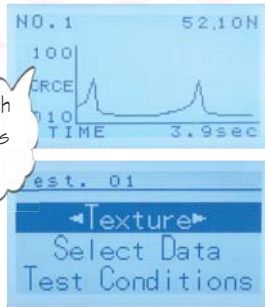
Point 1

Automatic measurement by simple setting
Simply select the test method from MENU and input necessary requirements. Then the tester automatically operates specialized testing.



Point 6

Easy-to-see display
The display shows simple graph, specimen's characteristic can be grasp at glance.



The LCD display with white back light gives you good view!

- ★ Texture test
- ★ Jelly strength test (JIS K 6503 or minced fish)
- ★ Compression test
- ★ Tension test
- ★ Peel test

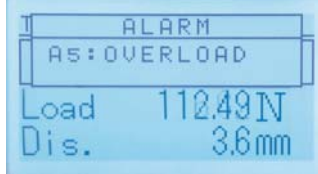
Point 2

Wide working space
The working platform has wide and flat area so that you can set big specimen or work with comparable specimens side by side.



Point 7

Automatically stop when overload
The tester will automatically stop operation when it is overload.



Display when stop when over load
※Factory dose not guarantee for overloade.

Point 3

Water Proof
Working space area has splash-proof structure and is safe for small amount of water.



Stainless steel is used for the working platform.
※ Be sure that the power switch, printer and back of the tester are not wet proof.

Point 8

Small Size Design
Its small sized design enables the tester to be portable even for ladies.



It is easy to carry as the width is 35cm and weight 16.5kg.

Point 4

You can exchange the jig easily
You can exchange the jig easily by turning the knob without using any tools.



Jig is exchangeable by turning the front knob.

Point 9

Store Data in USB Memory
The tester can transfer data to USB memory so that you can easily transfer to PC.



Big data? No problem with data-control!

Point 5

Come with printing function
The tester is equipped with printer and you can print the result just after measurement.



Test results are instantly printed.

Point 10

Tester comes with PC software
PC software for controlling data is standard accessory. It is possible to connect the tester with PC and capture data.

